

**KOLKATA PORT TRUST**  
**HALDIA DOCK COMPLEX**

**Tender No. SDM(P&E)/T/38/2018-2019**

**E-Tender No. KoPT/Haldia Dock Complex/P&E Div/40/18-19/ET/387**

**ADDENDUM - I**

*CORRECTIONS / ADDITIONS / DELETIONS, ETC.*

**[Total Number of Pages: 1]**

**NOTE :**

1. This "Addendum-I" should be read in conjunction with Bidding Document (including Notice Inviting e-Tender).
2. Consequential changes, arising out of this Addendum-I, will be deemed to have been effected, even if the same were not incorporated specifically in the Bidding Document.
3. All other terms and conditions of the Bidding Document (including Notice Inviting e-Tender) will remain unchanged.

**Addendum -I**

**Tender No. SDM(P&E)/T/38/2018-2019**

**E-Tender No. KoPT/Haldia Dock Complex/P&E Div/40/18-19/ET/387**

<b>Sl. No.</b>	<b>Page No.</b>	<b>Clause No.</b>	<b>As specified in the Bidding Document</b>	<b>To be deleted &amp; read as / Remarks</b>
1.	--	Table of contents Part-5	Over Head Line route layout [Not uploaded]	Over Head Line route layout [Uploaded]  i) Route layout drawing (Drg.No.ELEC-O/L-1) from Intake Substation to GC berth 4 Pole near Permit office  ii) Route layout drawing (Drg.No.ELEC-O/L-2) from Intake Substation to 4 Pole near CJP Fire Station  iii) Route layout drawing (Drg.No.ELEC-O/L-3) from GC berth 4 Pole near permit office to inside of GC Berth sub-station
2.	Page-97-99	Clause No.08  List of approved makes	Insulator- Not mentioned ACSR- Not mentioned Hardware fitting:- Not mentioned	Insulator- Aditya Birla /APAR Industries ACSR- APAR Industries/Sterlite Power/Lumino Industries/Gupta Power/Alcon Hardware fitting –Reputed make as per sample approved by the engineer.
3.	Page -76	Technical Particulars: Sl. No. 19	<b>OLTC of 6 MVA, 33/3.3 kV Power Transformer:</b> On load tap changer with tapping range +/-5% @ 2.5%.	<b>OLTC of 6 MVA, 33/3.3 kV Power Transformer:</b> On load tap changer with tapping range +5% to -15% @ 1.25% [16 step /17 position].
4.	---	---	Soil bearing capacity: Not mentioned.	5T/SQ.M. at the depth of 2.5Mtrs.
5.	6	SOT 3.12	i) Starting date & time of submission of e-Tender at <a href="http://www.mstcecommerce.com/eprochome/kopt">http://www.mstcecommerce.com/eprochome/kopt</a> : 12.04.2019 from 11: 00 Hrs. (IST).	i) Starting date & time of submission of e-Tender at <a href="http://www.mstcecommerce.com/eprochome/kopt">http://www.mstcecommerce.com/eprochome/kopt</a> : 20.04.2018 from 11: 00 Hrs. (IST).
6.	6	SOT 3.12	ii) Closing date & time of submission of e-Tender at <a href="http://www.mstcecommerce.com/eprochome/kopt">http://www.mstcecommerce.com/eprochome/kopt</a> : 18.04.2019, up to 15: 00 Hrs. (IST).	ii) Closing date & time of submission of e-Tender at <a href="http://www.mstcecommerce.com/eprochome/kopt">http://www.mstcecommerce.com/eprochome/kopt</a> : 02.05.2019, up to 15: 00 Hrs. (IST).
7.	6	SOT 3.12	iii) Date & time of opening of Part-I (Techno-commercial Bid): 18.04.2019, 15:30 Hrs. (IST) onwards.	iii) Date & time of opening of Part-I (Techno-commercial Bid): 02.05.2019, 15:30 Hrs. (IST) onwards.

**QUERIES OF DIFFERENT FIRMS IN CONNECTION WITH THE PRE-BID MEETING HELD ON 10.04.2019****for**

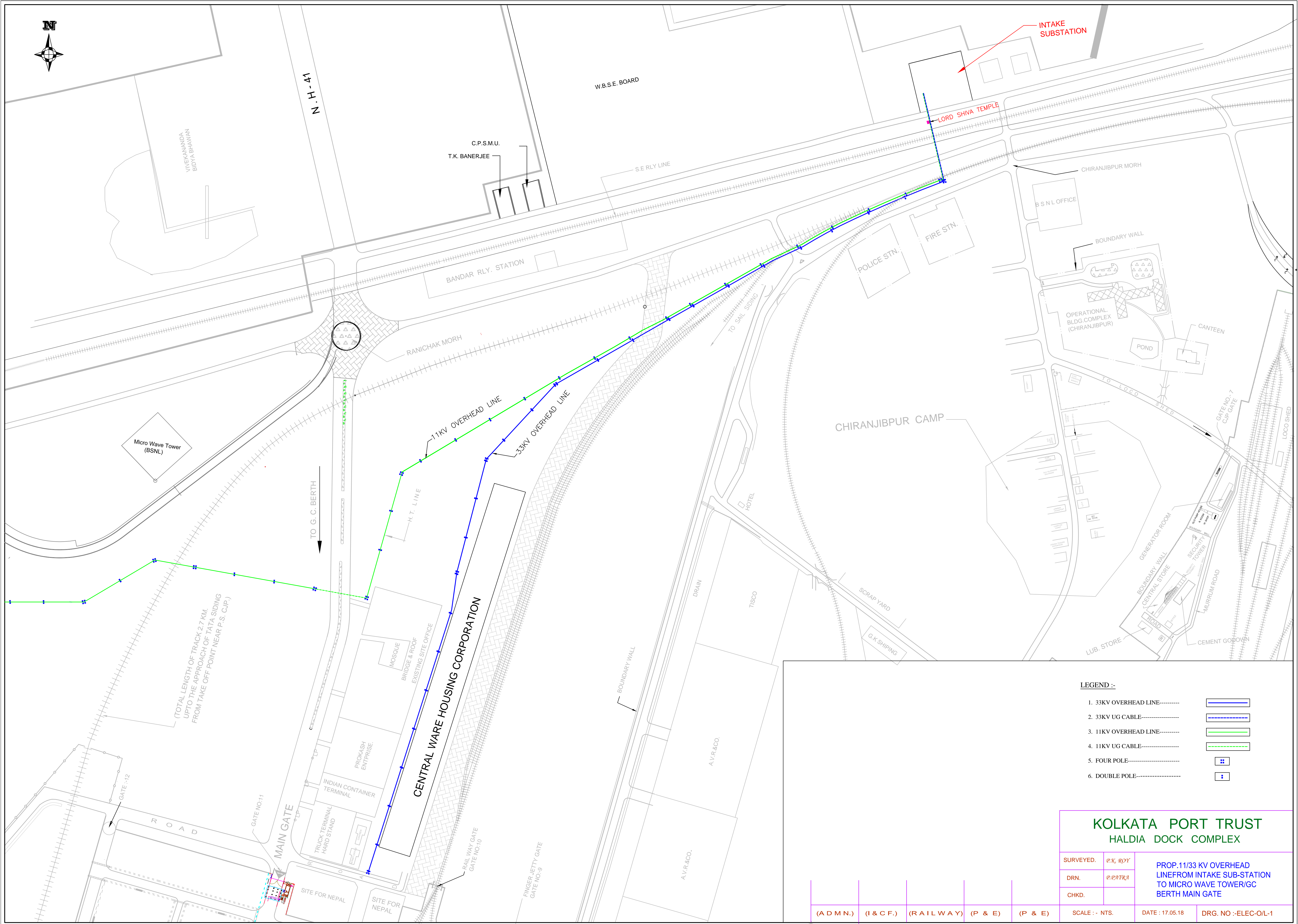
**“Supply, Installation, Testing and Commissioning of 33 kV Over Head Line & Under Ground Cable from Intake Substation to GC Berth Substation for strengthening of power supply arrangement of RMQC-3 of HDC, KoPT”**

**Tender No. SDM(P&E)/T/38/2018-2019****E-Tender No. KoPT/Haldia Dock Complex/P&E Div/40/18-19/ET/387**

<b>Sl. No.</b>	<b>Reference</b>	<b>Queries of the firms</b>	<b>HDC, KoPT's Clarifications</b>
<b>1.</b>		If there is any hard copy of documents like (NSIC document, power of attorney, integrity pact etc.) have to be submitted to KoPT. Please confirm.	Relevant documents to be scanned and uploaded through <a href="http://www.mstcecommerce.com/eprochome/kopt">http://www.mstcecommerce.com/eprochome/kopt</a> of MSTC Ltd.
<b>2.</b>		We did not find any layout drawing and key erection for this package. Please provide the same.	Please see the addendum.
<b>3.</b>		Can we use the rail pole that is already erected at pond area as we observed through our site visit that the pond area is difficult to erect the pole or will there some sort of arrangement/ Clearance provided by the employer to perform the job in that area [almost 4 to 5 span rail pole ]. Please clarify the same.	Already erected rail pole can not be used.
<b>4.</b>		The scope of work at GC Berth area about the cable trench work. Please clarify.	Already elaborated at Page No. 180 of tender document.
<b>5.</b>		Is there any department/ authority involved for giving authorization/ permissions for the shut down process / Clearance to perform the erection .Please clarify.	Plant and Equipment division of HDC will arrange for necessary shut down on demand from the bidder.
<b>6.</b>		Please give us some addition days atleast 15days of extension so that we can quote our best offer against your enquiry.	Please see the addendum.

Sl. No.	Reference	Queries of the firms	HDC, KoPT's Clarifications
7.		<b>Overhead Line Layout:</b> Kindly provide the proposed 33 kV Overhead line layout as mentioned in the table of contents.	Please refer Route layout drawing (Drg.No.ELEC-O/L-1) from Intake Substation to GC berth 4 Pole near Permit office as per addendum.
8.		<b>Approved make:</b> Kindly provide approved make of insulator, ACSR Conductor & Hardware fittings.	Please see the addendum.
9.		<b>GC Berth:</b> Kindly provide route layout from GC Berth 4pole near permit office to inside of GC Berth sub-station.	Please refer Route layout drawing (Drg.No.ELEC-O/L-3) from GC berth 4 Pole near permit office to inside of GC Berth sub-station as per addendum.
10.		<b>HDC Store distance:</b> Please mention HDC store distance from the dismantling route of 11kV Overhead line.	2Kms.(approx.)
11.		<b>OLTC of 6 MVA,33/3.3 kV Power Transformer:</b> We are considering on load tap changer with tapping range +5% to -15% @ 1.25% [16 step /17 position]. Please confirm.	Please see the addendum.
12.	Clause no. c of (e),page no.35 of tender document	<b>Land:</b> We understand that complete free land will be handed by HDC to start the work at Intake and GC Berth sub-station, 33 kV line. Only the crossing of the railway and road, the Clearance to be taken from competent authority. Cost for that Clearance should be borne by the contractor please confirm.	Please refer Route layout drawing (Drg.No.ELEC-O/L-2) from Intake Substation to 4 Pole near CJP Fire Station as per addendum. The complete land pertains to HDC. However, contractor need to take approval for Railway/ Road crossing as per tender clause no. c of (e) at page no.35 of tender document
13.		<b>Soil bearing capacity:</b> Please indicate the soil bearing capacity at Intake and GC Berth Sub-station.	Please see the addendum.
14.		Kindly extend the closing date of the submission of the tender by at least 30days fro the present closing date.	Please see the addendum.



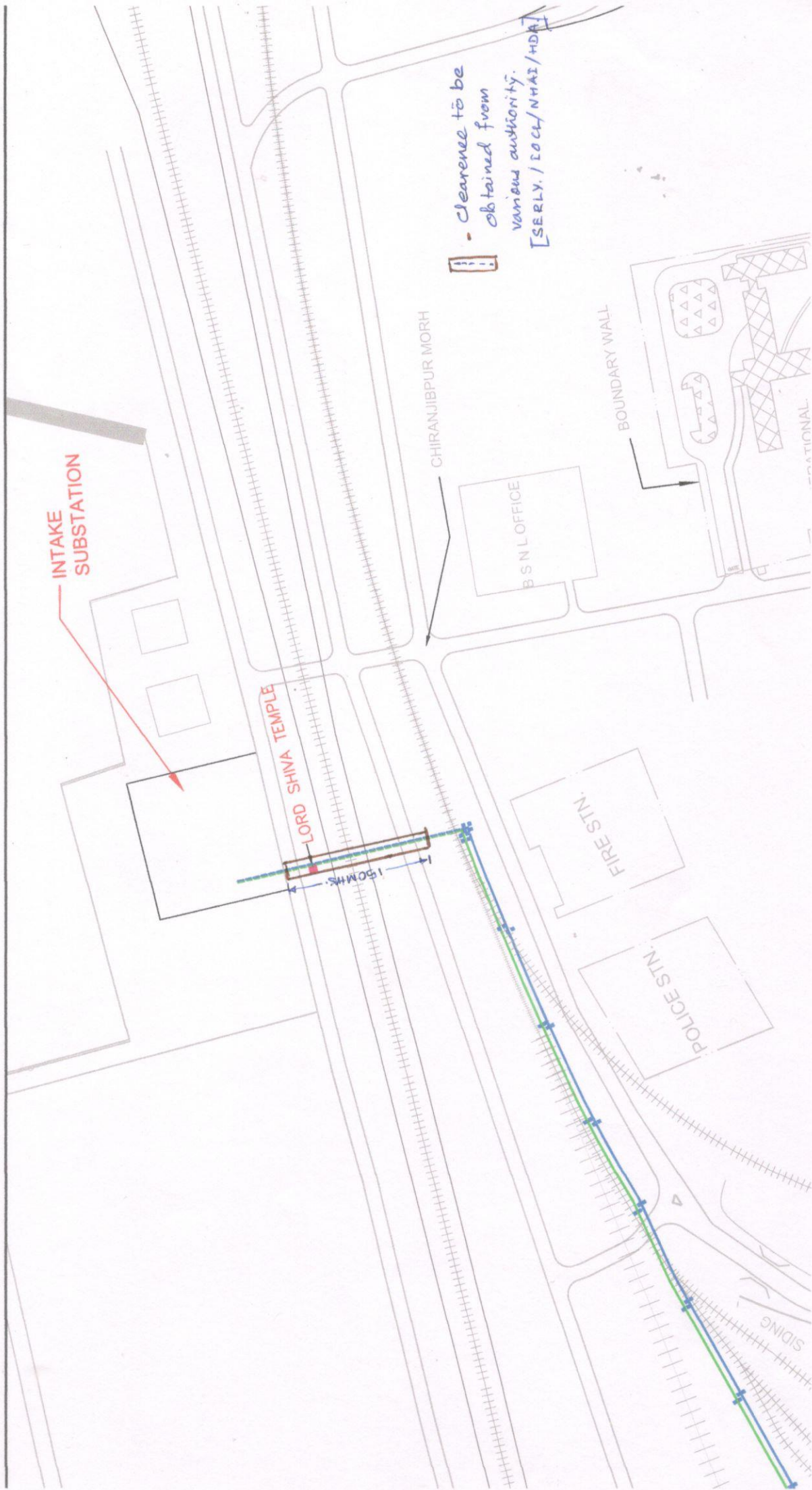


- LEGEND :-
- 1. 33KV OVERHEAD LINE-----
  - 2. 33KV UG CABLE-----
  - 3. 11KV OVERHEAD LINE-----
  - 4. 11KV UG CABLE-----
  - 5. FOUR POLE-----
  - 6. DOUBLE POLE-----

KOLKATA PORT TRUST HALDIA DOCK COMPLEX					
SURVEYED.	P.K. ROY	PROP. 11/33 KV OVERHEAD LINE FROM INTAKE SUB-STATION TO MICRO WAVE TOWER/GC BERTH MAIN GATE			
DRN.	P. PATRA				
CHKD.					
(ADMN.)	(I & C.F.)	(RAILWAY)	(P & E)	(P & E)	SCALE : - NTS.
				DATE : 17.05.18	DRG. NO :- ELEC-O/L-1



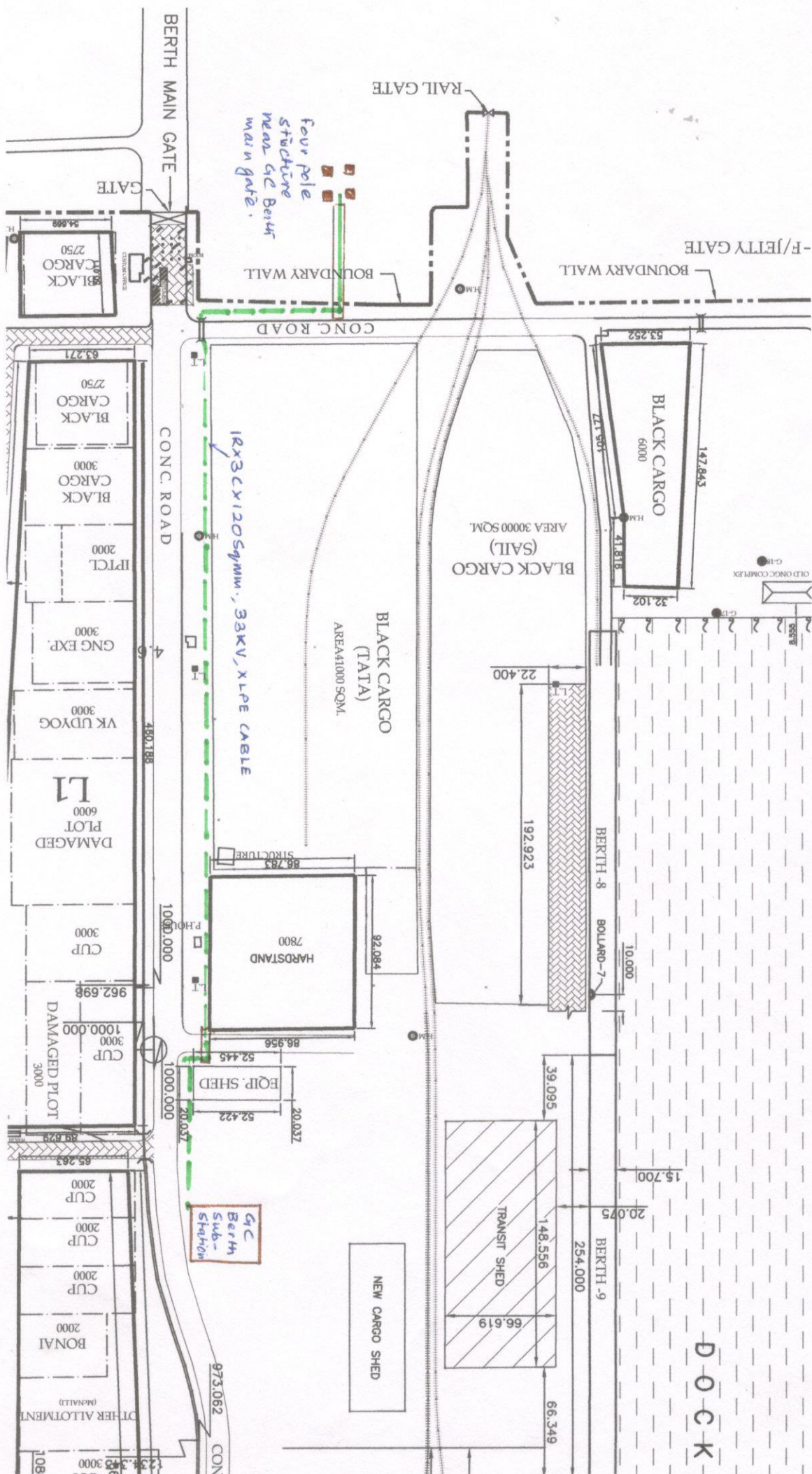
For Tender purpose only.



Drng No:- ELEC-0/L-2



Tentative Route  
For  
Tender Purpose only.



Drg No: - ELEC-0/L-3